



SHARING
CHRIST'S LOVE
AT THE UNIVERISTY
OF WISCONSIN -
MADISON
SINCE 1907

IN THIS ISSUE . . .	
Worship Update	1
Student Perspective	1
A Faith-Based Community	2
New Staff	3
In Remembrance	3
Rev. Erica Liu's Installation and Ordination	4

Winter 2005

FROM THE CAMPUS
CO-PASTOR

Rev. Erica Liu

What do we do when we worship God?

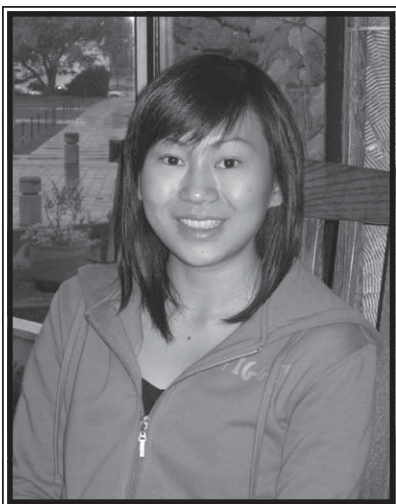
At Pres House this fall, we have been answering this question in several ways. If you entered the chapel on Sunday afternoon, you would find a bucket of pens and stones to be used as ways of expressing an offering to God. You might sing a song written by a student musician about his "Dad" in heaven. During the sermon time, you would be invited to share questions or thoughts in a dialogue with the people present. And of course there would be food! A home-cooked meal around tables is the concluding element of worshipping together.



After a period of pause in active student ministry, Pres House began worship services this past September. New students have been entering through the doors and finding a place where they can explore their faith and ask deep questions. In addition to Sunday worship, a Faith Discussion Group and Bible Reading Group meet weekly. Students participated in the local CROP walk for hunger, and half

of our weekly offering supports the International Justice Mission. Community is being built as people experience authentic relationships with God and each other.

As one of the pastors at Pres House, I am excited by the students who are starting to call Pres House their home. For those who are just beginning their spiritual journey, Pres House is a place where they feel welcome and safe enough to ask who Jesus is. For those who know Jesus, Pres House is a place where they are learning to let God's grace and love impact how they live. Together we are finding out what it means to be a community which seeks Christ in everything we do. All are welcome – come as you are. ☚



A STUDENT
PERSPECTIVE

Devi Wijaya

My name is Devi Wijaya and I am a second year graduate student in Food Science. I was born and raised in Indonesia until I was 15. After going to high school in Singapore, I came to the United States five years ago. I graduated from UC Berkeley in 2004 and moved to Madison this fall.

I was introduced to the Wednesday faith discussion group last year when I met Mark and Erica. Since then, I have been involved in a number of activities at Pres House. Now I am a part of the worship team that plans and holds worship gatherings every Sunday. I am mainly involved in the music team and am very joyful to be a part of this unique community.

At Pres House, I not only found friends but support to help my faith grow even more. ☚

A FAITH-BASED COMMUNITY

Rev. Mark Elsdon

A recent study found that 70 percent of teens believe in God and over 50 percent think that religion is very important. Universities, however, do not often provide many places for young people to develop their faith. Pres House is committed to providing space for students to explore what Jesus Christ has to do with life and with their studies. We do this in worship, in discussion, through Bible study, and through mission and service. Soon our new housing facility will join that list as a vital way for students to grow in faith and encounter Jesus Christ in new and refreshing ways.

Students need a place to stay physically healthy – so they go the athletic center to exercise. They need a place to explore their emotions – so they go to the counseling center. Students come to the university to learn an academic discipline – so they go to class. They also need a place to develop spiritually. We invite them to join us at Pres House – to speak, listen, sing, pray, question, worship... and to live.

We will soon provide a unique spiritual learning community in the heart of the campus. It will be much more than a place to sleep. Resident



Assistants will help create a healthy atmosphere that will be conducive to studying and learning. Programs and informal conversations will engage residents in dialogue about faith and spirituality. Community building activities will provide space for friendships to develop and flourish. Service opportunities will allow residents to put their faith into practice. And of course students will have the option of stepping next door to join in worship!

We aim to house students from diverse ethnic, social, economic and religious backgrounds. We expect that Christian students as well as adherents to other faiths (or those with no faith) will want to live in the building. This reflects the reality of our increasingly diverse society and

honors friendships that are formed across religious experiences. Diversity among the residents will provide a rich environment for dialogue and exploration.

Those of us here at Pres House are not the only ones excited about this new faith-based student community. Our plan took a satisfying step forward on October 11th when the City of Madison Common Council approved our project. This follows the Landmark Commission's approval on August 22 of our plan to restore and update the heritage building. We expect to break ground in spring 2006 and be open by summer 2007. There is a great deal of support for this unique housing option that will be a major addition to the university and the city of Madison. ☩

"Students seek out places where they feel comfortable and safe. Places that allow them to be themselves and to be able to ask important questions. I think the Pres House housing project will provide a new, unique place for students looking for such a place to live. It will give them a place to live while they are attending a large public university where they will be able to find a spiritual community. I think it is an important addition to the choices students have at U.W. Madison."

- Paul Evans, Director, Division of University Housing, UW-Madison

"We fully support this project and its mission."

- Gary Brown, Director, Planning and Landscape Architecture, UW-Madison

"I am supporting the Pres House project whole-heartedly. It promises to fill an important niche in campus housing and student life."

- Austin King, Alderperson for the Pres House district

"I believe that the city and the campus community will benefit from the Pres House project."

- Dick Wagner, Chair, Building Committee, St. Paul's Catholic Center

MEET THE NEW PRES HOUSE STAFF

**KARI BUSIAHN
MUSIC DIRECTOR**



I was born in Washburn, Wisconsin, and lived there until I was 13. I then moved to Babbitt, Minnesota. I began playing the piano at age seven, and like many kids, had somewhat of a love-hate relationship with it throughout elementary school. Eventually, however, the love won out and I became more serious about my music studies. This led me to pursue a bachelor of music degree in piano performance at St. Olaf College. During college, I realized I had a strong interest in teaching piano, so upon graduation I enrolled in UW-Madison to earn a master's in piano performance and pedagogy. I finished my degree in May. In addition to my work at Pres House, I teach piano lessons at the Arboretum Music School in Waunakee.

Church music has also become an important part of my life. After high school, I began accompanying my church choir and playing for some services, and through the years, I have been blessed to have the opportunity to be a part of many different church music environments. I hope to make use of these experiences in my work at Pres House. Currently, I play for the choir at Asbury United Meth-

odist Church as well as for the Latino Ministry service at Bethel Lutheran Church. ☞

**LINDA LINDLEY
ADMINISTRATIVE ASSISTANT**



I grew up in the Madison area and currently live in Black Earth with my husband, Joe. Our grandson, Isaiah, lives in Prairie du Sac with his parents, Rhyan and Emily. Jennifer, a member of our extended family, and her husband, John live in Madison.

I graduated from UW-LaCrosse in secondary education. My professional career has been primarily working with nonprofit trade associations in the adult education arena as well as facilities management/renovation.

I became a Christian through the Billy Graham ministry. While in college, I was involved with Campus Crusade for Christ and various church youth groups. While attending Midvale Baptist Church, I was a Bethel Series instructor. For the past three years, Joe and I have opened our home to the Young Life youth ministry.

Genesis 12 teaches us that God blesses us so that we may be a blessing. It is my prayer that God will continue to bless Pres House and lead us all in this exciting new building project, renovation, and student ministry. ☞

In Remembrance Miriam Bellville

Pres House alumni may recall Miriam Bellville as Organist and Director of Music at Pres House from about 1946 to 1955. Miriam died on August 15, 2005, at age 88 in Redlands, California, two years after moving into Plymouth Village. Her quiet and gentle manner inspired those involved in the large choral programs--separate choirs for both Sunday morning worship services. She introduced participants in the music program to great choral music including major oratorios, always utilizing students as soloists. She encouraged student organists to provide Sunday and Wednesday evening vesper music. Her capabilities were greatly admired by the ministerial staff including Revs. Cecil ("Doc") Lower, Marvin Kausler, Bob Villwock, and Jack Collins. Upon leaving Pres House, Miriam taught most of her professional life as professor at Alma College, Alma, Michigan. Her training was at Eureka College in Illinois, and her Master's degree in Sacred Music was from Union Theological Seminary. An organ recital in Miriam's memory was held at First Lutheran Church, Redlands, California, on September 17, 2005.

Partner with Pres House

We need God's help and yours--both your prayers and your financial support. We are grateful for your prayers and your financial support. We are grateful for your past prayers and monetary gifts; please consider contributing to this important student ministry. Send your tax deductible contributions to Pres House at 731 State Street, Madison, WI 53703.



PRES HOUSE
 WWW.PRESHOUSE.ORG

 PRES HOUSE WITNESSES
 TO JESUS CHRIST
 AT THE HEART OF THE
 UNIVERSITY OF
 WISCONSIN-MADISON
 CAMPUS, SERVING
 THE UNIVERSITY
 COMMUNITY AS A
 MISSION OF THE
 PRESBYTERIAN CHURCH,
 USA AND IN COOPERATION
 WITH OTHER MINISTRIES.

Left: Pictures from the ordination and installation of Reverend Erica Liu as Campus Co-Pastor.

Dave Olson, Resident Manager

karti@preshouse.org

Kari Busahn, Music Director

linda@preshouse.org

Linda Lindley, Administrative Assistant

ted@preshouse.org

Ted Schmidt, Director of Business Operations

erica@preshouse.org

Erica Liu, Campus Co-Pastor

mark@preshouse.org

Campus Co-Pastor/Executive Director

Mark Elsdon

Address Service Requested

731 State Street
 Madison, WI 53703
 608.257.1030 telephone 608.257.639 fax
 www.preshouse.org info@preshouse.org

PRES HOUSE

NON PROFIT ORG.
 U.S. POSTAGE
PAID
 PERMIT NO. 1851
 MADISON, WI